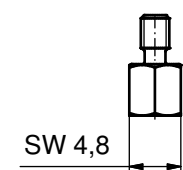
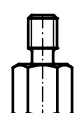
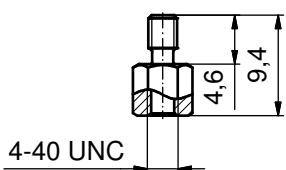
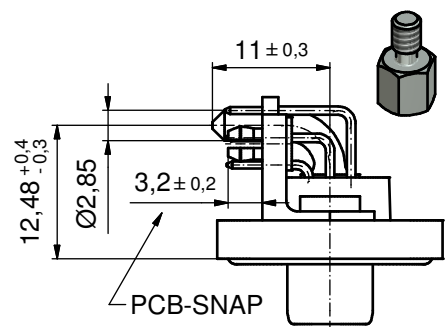
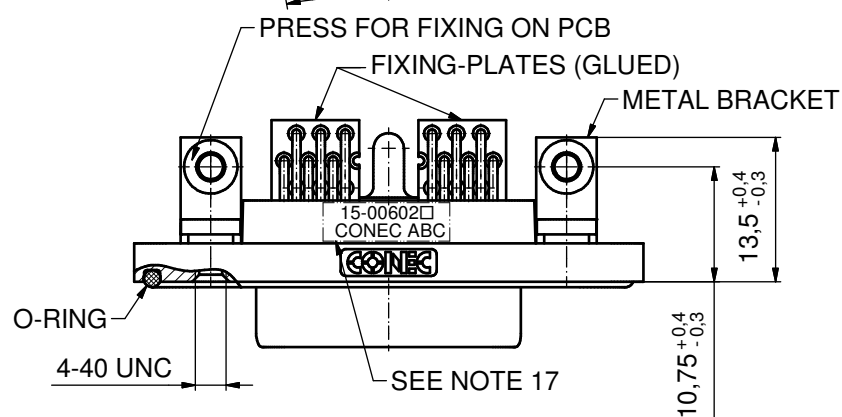
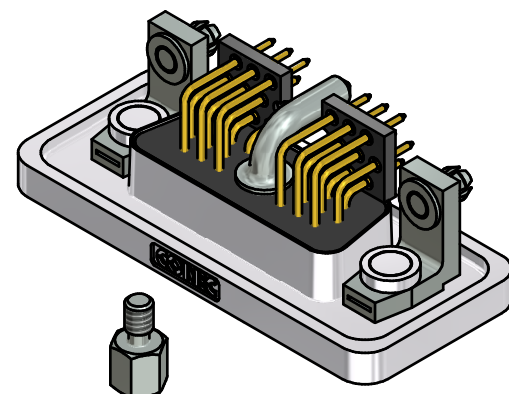
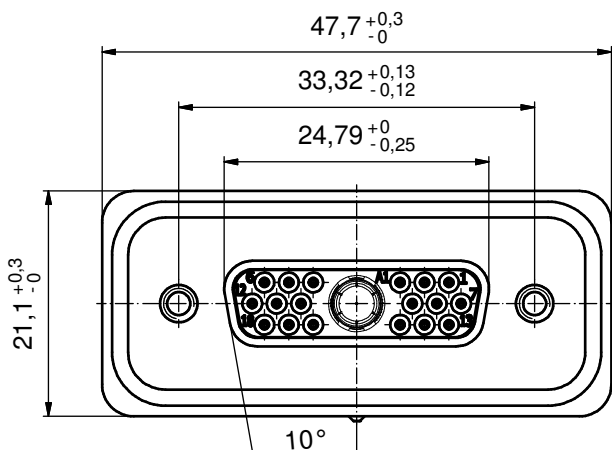
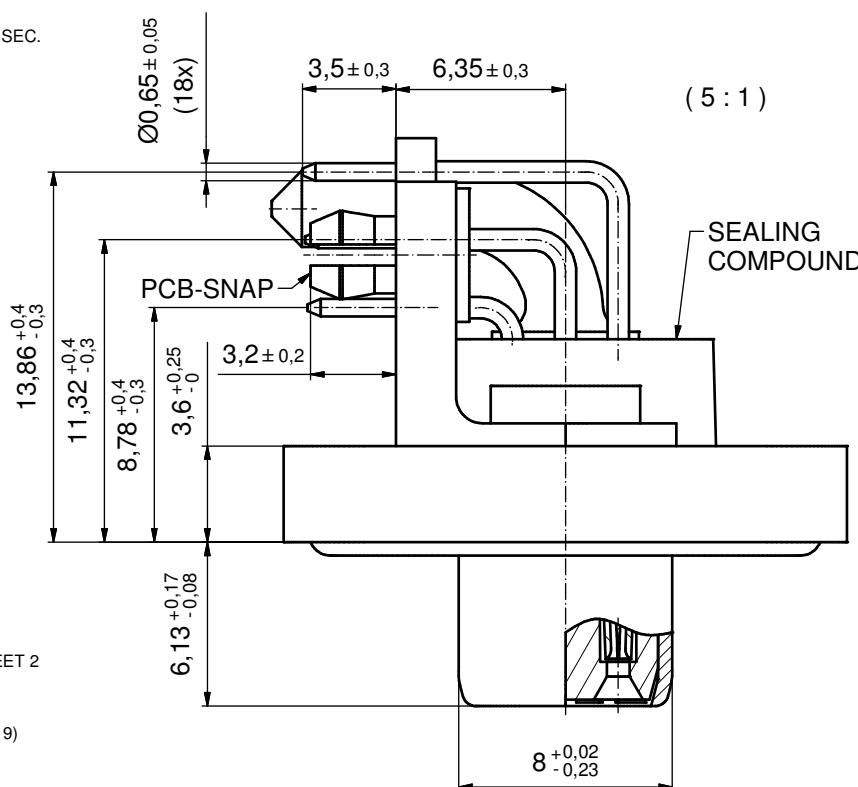


NOTES:

1. FOR WAVESOLDERING (SOLDER BATH TEMPERATURE 265°C FOR 8 SEC. AND SOLDER PREHEAT 150°C FOR 180 SEC.)
2. IP RATING: IP67
3. SEALED TO WITHSTAND PRESSURE UP TO 1,45 PSI FOR 30 MINUTES AFTER HIGH TEMPERATURE EXPOSURE
4. METAL SHELL: ZINC DIE CAST; min. 50µin NICKEL PLATING over COPPER
5. INSULATORS: PBT GF UL 94 V-0; GREEN
6. O-RING: SILICONE PER ASTM D2000 70 SHORE A
7. SEALING COMPOUND: EPOXY RESIN UL 94 V-0; BLACK
8. SIGNAL CONTACTS: COPPER ALLOY PLATING (SEE PART-NO.): 30µin HARD GOLD over min. 50µin NICKEL if 3□ in PART-NO. GOLD FLASH over NICKEL if 3□ in PART-NO.
9. HIGH POWER CONTACTS 20A: COPPER ALLOY PLATING, MATING SIDE (SEE PART-NO.): □ PLEASE ADD 1 for 30µin HARD GOLD over min. 50µin NICKEL □ PLEASE ADD 3 for GOLD FLASH over NICKEL PLATING, TERMINATION SIDE: 160-240µin TIN over 80µin NICKEL
10. METAL BRACKETS: ZINC DIE CAST; 300µin COPPER/40-120µin NICKEL/120-200µin TIN
11. WASHERS: COPPER ALLOY; 80µin NICKEL
12. P.C.B. SNAPS: COPPER ALLOY; min. 200µin TIN over 80µin NICKEL PCB-HOLE:  $\varnothing 3,1 \pm 0,1$ ; PCB THICKNESS 1,6mm
13. HEXLOCKING SCREWS: STAINLESS STEEL
14. FIXING-PLATES: PBT GF UL 94 V-0; BLACK
15. PCB-HOLE DRILLINGS and RECOMMENDED PANEL CUT-OUT ON SHEET 2
16. RECOMMENDED TORQUE FOR MOUNTING SCREW 35Ncm (3.1 in.LB) / max. 67Ncm (6 in.LB)
17. CONNECTOR IS PART MARKED: 15-00602□ CONEC ABC (see note 9)



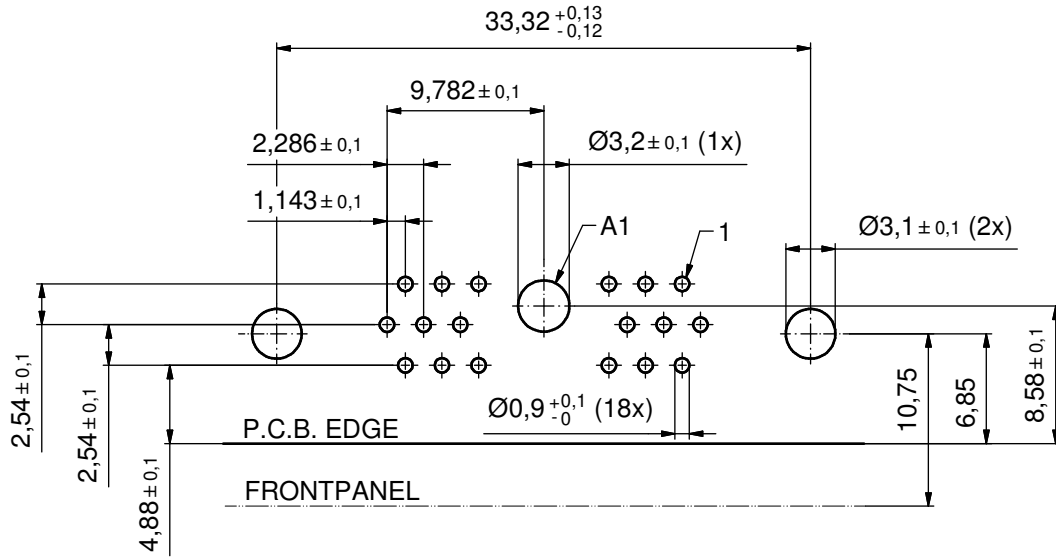
AT ALL TIMES WATER RESISTANT CONNECTORS NOT IN USE SHOULD BE COVERED WITH A CONEC WATER RESISTANT CAP OR WATER TIGHT HOOD.

Directive 2002/95/EC RoHS compliant

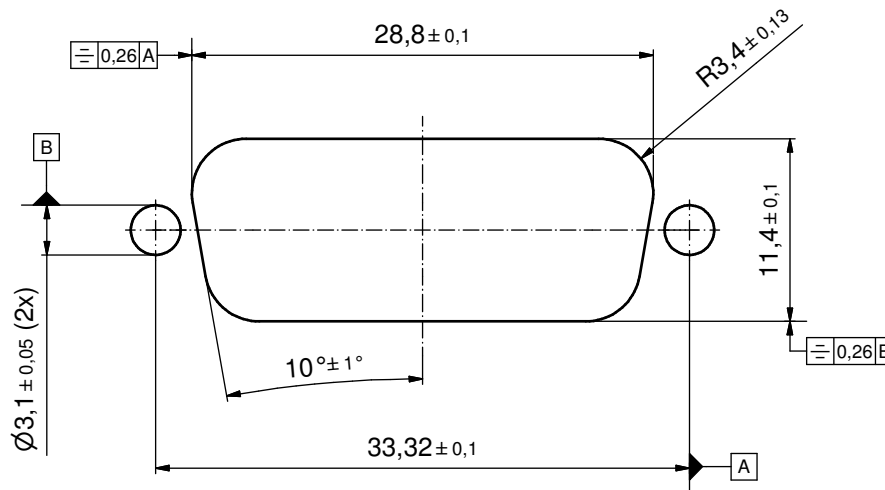
THIS DRAWING MAY NOT BE COPIED OR REPRODUCED IN ANY WAY, AND MAY NOT BE PASSED ON TO A THIRD PARTY WITHOUT WRITTEN PERMISSION. OWNERSHIP AND COPYRIGHT OF CONEC GmbH	DO NOT ALTER CAD DRAWING BY HAND		tolerance	$\varnothing$ dim. in mm	scale: 2:1 (5:1)	
			date	name	material: SEE NOTES	
			drawn	15.01.14	Henneboel	title: D-SUB HD COMBINATION FEMALE 90° 19W1S SOLDER PIN ANGLED with metal bracket, hexlocking screw and snap
			appd.	20.01.14	Schmidt	
		norm			dwg no:	
		d-old			DIN-A3	
		rev.	description	date	name	sh: 1/2
		<b>CONEC</b>			part no: 15K1A1417	(see note 9)

# P.C.B. HOLE DRILLINGS

(P.C.B. TOP SIDE)



## RECOMMENDED PANEL CUT-OUT



THIS DRAWING MAY NOT BE COPIED OR REPRODUCED IN ANY WAY, AND MAY NOT BE PASSED ON TO A THIRD PARTY WITHOUT WRITTEN PERMISSION. OWNERSHIP AND COPYRIGHT OF CONEC GmbH DO NOT ALTER CAD DRAWING BY HAND	tolerance		dim. in mm		scale: 3:1
					material: SEE SHEET 1
	date	name		title:	
	drawn 15.01.14	Henneboel		P.C.B. HOLE DRILLINGS RECOMMENDED PANEL CUT-OUT D-SUB HD Combination Female 19W1S	
	appd. 20.01.14	Schmidt			
norm		d-old		dwg no:	DIN-A3
a Original				15K1A1417	sh: 2/2
rev.	description			date	name