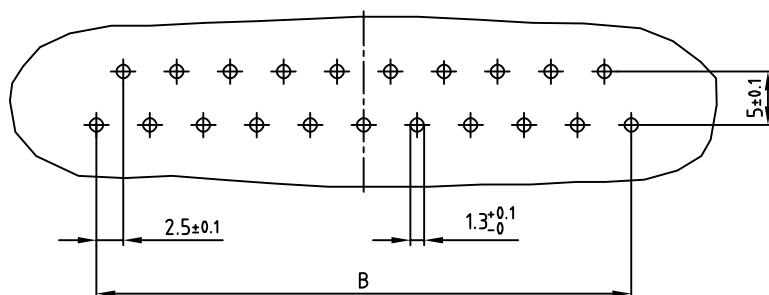
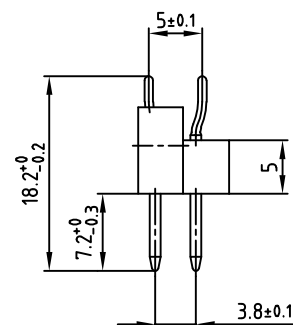
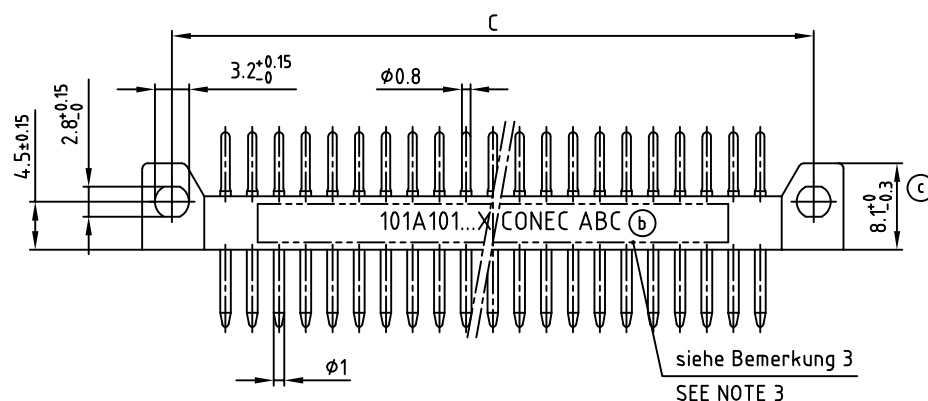
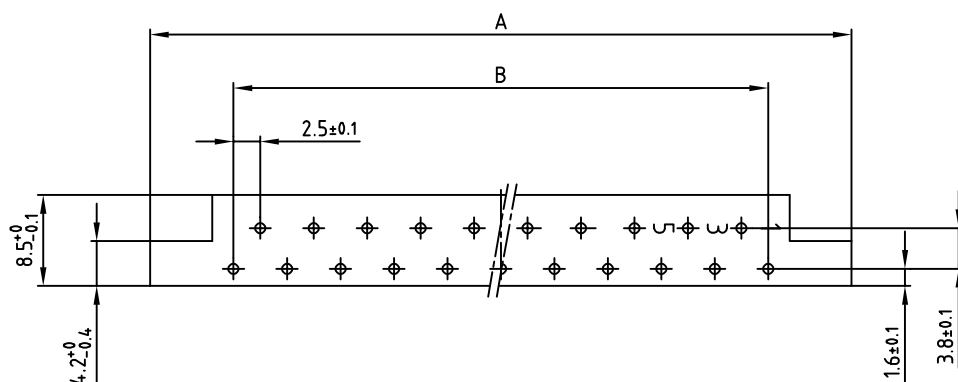


used for:	DIN 41617
-----------	-----------

Polzahl No. of pos.	A ± 0.2	B ± 0.1	C ± 0.1	Art.-Nr. Part-No.
13	45.6	12x2.5=30	40	101A10169X
31	90.6	30x2.5=75	85	101A10189X



Leiterplattenbohrbild
P.C.B.-HOLE DRILLINGS

Bemerkung:

1. Isolierkörper: PC GF UL 94 V-1, grau (b)
2. Kontakte: Cu-Legierung
Veredelung: Au über Ni
3. Bedruckung: Art.-Nr. CONEC ABC

NOTES:

1. INSULATOR: PC GF UL 94 V-1, GREY (b)
2. CONTACTS: COPPER ALLOY
PLATING: GOLD FLASH over NICKEL
3. CONNECTOR IS PART MARKED: PART-NO. CONEC ABC

Directive 2002/95/EC RoHS compliant

THIS DRAWING MAY NOT BE COPIED OR REPRODUCED IN ANY WAY, AND MAY NOT BE PASSED ON TO A THIRD PARTY WITHOUT WRITTEN PERMISSION.

OWNERSHIP AND COPYRIGHT OF CONEC GmbH

DO NOT ALTER CAD DRAWING BY HAND

1 x c	Ä4688	15.03.2013	E.Mick
3 x b	Ä4154	08.11.2011	K.H.
a	Original		
rev.	description	date	name

tolerance



scale:

2:1

material:	
-----------	--

SEE NOTES

	title:
--	--------

MALE CONNECTOR
13-31pos.
with straight solder pins

dwg no:	
---------	--

10K1A004

part no:

SEE TABLE

DIN-A
3
sh: 1/1

